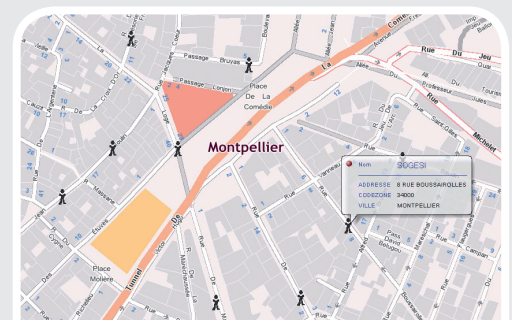


GeoConcept Universal GeoCoder

A powerful and scalable geocoding solution

GeoConcept Universal GeoCoder is a solution that enables an address to be converted into a geographical position (x and y coordinates) or geographical reference (territorial identifiers such as commune, district,...) and conversely to find an address from geographical coordinates (inverse geocoding / reverse geocoding). Geocoding underpins any analysis or operational process and thus exists in very different contexts of use.



Accuracy

GeoConcept Universal GeoCoder incorporates the XML standard, which enables corrections to be archived during the interactive processing of errors, as well as a French and foreign nomenclature manager which provides unrivalled geocoding performance irrespective of country. Be it town, district, street or house number, GeoConcept Universal Geocoder adapts to any type of geocoding.

Performance

GeoConcept Universal Geocoder supports geocoding of more than 8 million addresses per hour with very high success rates and adapts perfectly to every context where speed is important (call centre operations, calls to emergency services, maintenance callouts for equipment at risk...).

Interactivity

Very easy-to-use, the solution features a number of assisted configuration stages. The user is guided step-by-step, receiving detailed information from wizards and help menus. He can therefore easily create customised reference tables. Geocoding becomes accessible to everyone, both experts and novices alike.

Dissemination

Available as a standalone workstation and web version or as a web services solution, GeoConcept Universal Geocoder can be easily integrated into numerous application environments, thereby enabling web services to be implemented in Internet and intranet architectures. It adapts to every kind of database and international grammar.

Discover the main features of GeoConcept Universal GeoCoder 5.0

Mass geocoding

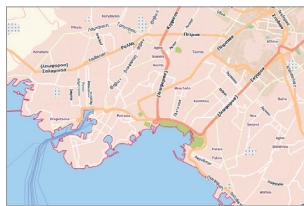
GeoConcept Universal Geocoder enables files containing millions of addresses to be geocoded, quickly and efficiently. Also known as batch geocoding, mass geocoding can be performed at town, district, street or house number level.

Standardisation

The various fields defined in GeoConcept Universal GeoCoder prompt the acceptance of reference addresses. The output addresses are then homogenous and identical to the chosen map reference. The address files are enriched with geographical coordinates and standardised addresses.

Unicode

GeoConcept Universal GeoCoder's Unicode compatibility enables all character types to be used, thus facilitating international interchanges.



Strategies

GeoConcept Universal GeoCoder enables you to select your own geocoding strategies. For example, to improve the results achieved, it is possible to include one or a number of so-called strategic elements, such as phonetic name recognition, the inclusion of the first two digits of the postcode...

Self-learning

The associations created by the user in the course of interactive error processing are memorised in editable XML file. Thanks to this spellchecking, errors are automatically corrected should they recur.

District and sector

To address the needs of socio-economic analyses based on government statistical units, GeoConcept Universal GeoCoder geocodes at the defined district or sector level (e.g. sales sectoring, IRIS, islands, zip code...) using a reference table enriched with an appropriate breakdown.



Projection

To ensure the best possible fit with each working environment, GeoConcept Universal GeoCoder restores the geographical coordinates in different projections : Lambert II extended, Lambert 93, UTM North...

Grammar

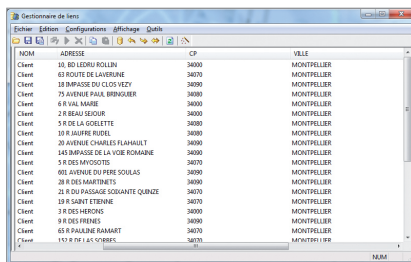
As the XML file is editable, the user has complete control of the geocoding grammar. For example it is possible to add types of thoroughfare or abbreviations specific to a country or activity, to ignore specific words recurring in the addresses...

Web services

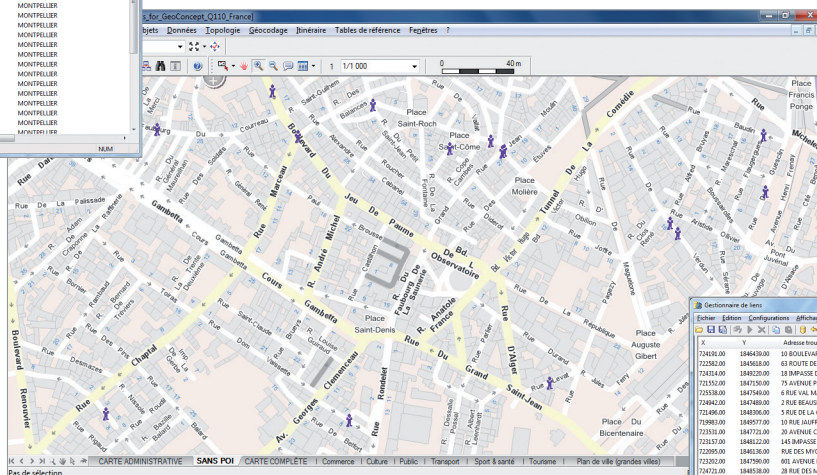
The multiplatform (Linux, Unix, Windows) geocoding web component enables geocoding web services to be created and shared, thus embedding geocoding at the heart of the web business applications.

Customised reference table

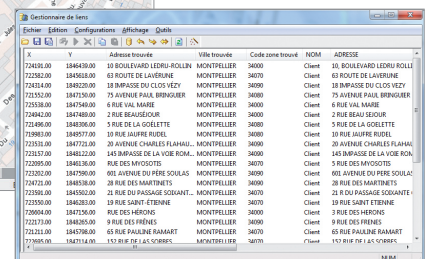
GeoConcept Universal GeoCoder's Builder version enables its own reference table to be created from any map reference table and select the associated projection.



Address database



Street level geocoding



Standardised addresses